

# Product Catalogue

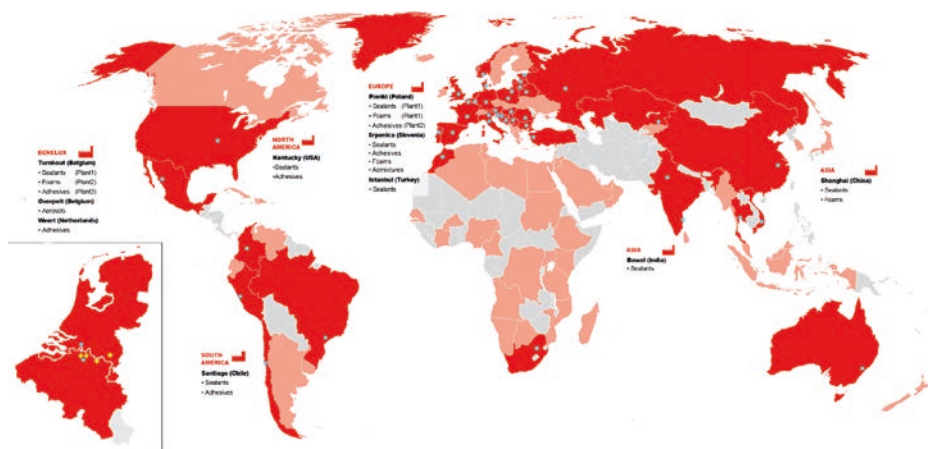
Experts in sealants, adhesives  
& PU foams



  
**SOUDAL**

## Soudal Worldwide

Soudal is the largest independent European manufacturer of PU foams, sealants, adhesives and building chemicals for the construction, retail and industrial markets. Soudal now operates on a fully global basis, with over 44 subsidiaries, sales into over 130 countries and a head-count of more than 2,200 employees. In 2015 the Group's consolidated turnover was in excess of €650M. Continued investments in R&D, a long-term vision for innovation and adaptations to local market requirements have resulted in Soudal's excellent performance, for which it was named Company of the Year in 2011.



Mitglied im  
Industrieverband  
Dichtstoffe e.V.

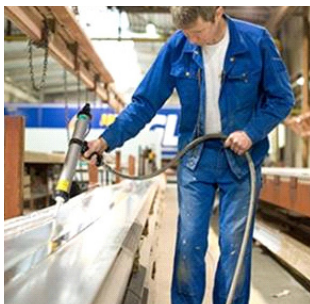


MPA NRW



[www.soudal.com](http://www.soudal.com)

[www.fixall.co.uk](http://www.fixall.co.uk)



## **Soudal - Experts in sealants, adhesives and PU foams**

Founded in 1966 by current Chairman Vic Swerts, Soudal has grown at over 10% per year, every year. Its success is based on the quality of its products and its ability to stay at the cutting edge of technology through innovation.

### **Quality**

Every week around 4 million cartridges and 2 million canisters of PU Foam are manufactured in our state of the art production facilities on various continents according to exacting quality standards. To maintain these standards, Soudal became the first company in its industry to achieve the ISO 9001 quality certification. Product consistency and full traceability are therefore ensured across the huge range of over 1,000 chemical formulations. In addition to this Soudal (Turnhout Belgium) has recently obtained the ISO 14001 certification for environmental management and is now certified to work in a way to minimize negative effects on the environment.

### **Innovation**

Highly qualified scientists, engineers and application technicians develop state of the art formulas, packaging and accessories to perfectly suit the demands of the market.

Driven by the will to continuously improve and to provide better and more environmentally friendly solutions for its customers, Soudal is leading from the front in product innovation.

### **Commitment to customers**

Apart from offering an extensive range of high quality products, Soudal offers ongoing commitment to providing outstanding service, guaranteed delivery times and a personalised approach to on-going partnerships with existing customers. Soudal's legendary flexibility in production and logistics stands it in good stead. Technical support is also a vital component of Soudal's commitment to customer service. This approach to customer service, together with an innovative and high quality product range has proved to be a winning formula.

Proud sponsor of:



# Contents Page

## CONSTRUCTION

Multi-Purpose Silicone .....	6
Building Silicone .....	6
Decorators Caulk .....	7
Light Weight Gap Filler .....	7
Fire Rated B2 Foam .....	8
Expanding Foam .....	8
Foam & Gun Cleaner .....	9

## SANITARY

Sanitary Silicone .....	10
Bathroom & Shower Silicone ..	10
Kitchen Silicone .....	11

## GLAZING

Interior Frame Sealant .....	12
Exterior Frame Silicone .....	12
Glazing Silicone .....	13

## ROOFING

Lead Sheet Sealant .....	14
Roof & Gutter Sealant .....	14
All Weather Sealant .....	15
Waterstop .....	15
Butyband .....	15

## ADHESIVES

Grip All Adhesive .....	16
Grip All Solvent Free Adhesive ..	16
Wood Glue .....	17
Mitre Kit .....	17

## EXPRESS RANGE

General Purpose .....	19
Decorators Sealant .....	19
Kitchen Silicone .....	20
Bathroom & Shower Silicone ..	20
Window & Door Silicone .....	21
Roof & Gutter Sealant .....	21

## GENIUS GUN

PU Adhesive .....	22
Insulation Foam .....	23
Gap Filling Foam .....	23

## Fix ALL

X-treme .....	25
High Tack .....	26
Crystal .....	26
Turbo .....	27
Flexi .....	27
Fills & Bonds .....	28
Floor & Walls .....	28

## REPAIR EXPRESS

Repair Express Cement .....	29
Repair Express Plaster .....	29

## T-REX

T-REX Solvented .....	31
T-REX Solvent Free .....	31

## FIRE RANGE

Soudafoam FR .....	32
Fire Silicone B1 FR .....	33
Firecyl FR .....	33
Firecement HT .....	34
Soudaseal FR .....	34
Silirub HT A .....	35
Silirub HT N .....	35

## FLOORING RANGE

SMX®-30 PLUS .....	36
MS-30 PLUS .....	36
MS-20 PLUS.....	37

## TECHNICAL AEROSOLS

Sealant Remover .....	38
Adhesive Remover .....	38
Multi-Cleaner .....	38
Cleaner & Degreaser .....	39
Brake Cleaner .....	39
Multi-Spray .....	40
White Grease .....	40
Vaseline Spray .....	41
Silicone Spray .....	41
PTFE Spray .....	41
Contact Spray .....	42
Degrip All .....	42
Cutting Oil .....	42
Zinc Spray Matt .....	43
Zinc Spray Shiny .....	43

## CLEANING RANGE

PVCu Frame Cleaner .....	44
PVCu Frame Cleaner Non Haz..	44
PVCu Cream Cleaner .....	45
Glass & Mirror Cleaner .....	45
SWIPEX Wipes .....	46
SWIPEX Hand Cleaner .....	46

## ACCESSORIES

Cleaning Tissue .....	47
Dust Sheet .....	47
Stair Runner .....	47
Tarpaulin .....	47
PU Foam Remover .....	48
Silicone Remover .....	48
Compact PU Foam Gun .....	48
Design PU Foam Gun .....	48
Cartridge Gun .....	48
Heavy Duty Cartridge Gun .....	48
Foam Nozzles .....	49
Twisty Nozzles .....	49
Cartridge Cutter .....	49
Trowels .....	49



# Introducing the NEW Trade Range...

Construction - Roofing - Glazing - Sanitary  
Sealants - Adhesives - PU foams





## Multi-Purpose Silicone

### DESCRIPTION

Acetoxy silicone sealant that cures to form a flexible, durable weathertight seal on many common building surfaces, including glass, metals, wood and ceramic tiles. Contains a fungicide that resists mould growth. Suitable for interior and exterior use.

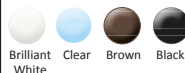
### APPLICATIONS

General construction, Masonry, Woodworking & Roofing, Flooring, Baths, showers & sinks, Kitchen fittings, Ceramic tiles, Plumbing, HVAC ducting, Shop windows and signs, Electrical conduit, Automotive.

- All weather use
- Mould resistant
- Flexible
- For internal & external use

### OPTIONS

#### 300ml Cartridge



**Special Trade Packs available  
6 x 300ml**

**Brilliant White & Clear**



## Building Silicone

### DESCRIPTION

High quality low modulus neutral cure silicone sealant. Virtually odourless. Very fast skinning time and final cure. Excellent toolability and primerless adhesion on all common construction materials. High movement capability. Resistant to UV, rain, snow, ozone, high and low temperatures and many chemicals.

### APPLICATIONS

Glazing construction and industrial sealing. Perimeter sealing of window, door frame and roofline systems. Can be used in direct contact with all types of glass, except self-cleaning types. Sealing of expansion joints. Roofing seals including lead, roofing slates and fibre-cement. Industrial sealing applications: coated metals, anodized aluminium, stainless steel. HVAC ducting, pipework and drainage joints. General maintenance sealing.

- For internal & external use
- Low odour
- Highly flexible
- Multi-use

### OPTIONS

#### 300ml Cartridge



## Decorators Caulk

### DESCRIPTION


An acrylic, solvent free dispersion that cures to form a durable, flexible seal. For internal use. Can easily be painted or papered over when dry.

### APPLICATIONS

Sealing gaps around internal window and door frames, skirting boards, plasterboard, staircases, architrave and coving.

- Flexible
- Paintable
- Smooth finish
- For internal use

### OPTIONS

300ml Cartridge	380ml Cartridge
 White	 Brown
 Magnolia	 Magnolia



Special Trade Packs available  
6 x 300ml

White



## Light Weight Gap Filler

### DESCRIPTION



Lightweight acrylic polymer based, repair plaster. For an easy and quick reparation or filling in walls & ceilings e.g. cracks, screw holes etc... Can be applied by trowel or gun. Sandable and over-paintable once dried. Non-shrinking.

### APPLICATIONS

For the filling and repair of cracks and small holes in walls and ceilings – plasterboard, concrete, stone, plasterwork, masonry and decorative plaster. For the filling of static joints and cracks in walls and ceilings.

- For internal use
- Paintable
- Smooth finish
- Good adhesion

### OPTIONS

300ml Cartridge	900ml Tub
 White	 White





## Fire Rated B2 Foam

### DESCRIPTION

Polyurethane B2 fire rated expanding foam filler. Easy to use, one component. Rapid curing with excellent thermal and acoustic insulation properties. Expands 30 to 40 times its initial volume. Primerless adhesion on most construction materials.

### APPLICATIONS

Especially for filling where a DIN 4102 B2 fire class is required. Thermal and acoustic insulation around doors and window frames, pipe penetrations, insulations and roofing materials and general construction.

- DIN 4102 B2 Fire class
- Thermal and acoustic insulation
- Good adhesion
- For internal and external use

### OPTIONS

750ml Hand Held: Champagne

750ml Gun Grade: Champagne



See page 32 for our full fire range.



## Expanding Foam

### DESCRIPTION

Moisture curing, self-expanding polyurethane foam adhering to all common building materials, resistant to water, heat and ageing. Excellent sound and heat insulation values. Can be cut, sanded, plastered and painted after full cure. Not UV resistant, cover once cured with sealant, paint or otherwise.

### APPLICATIONS

Fixing, filling and insulating of door and window frames. Insulating around pipes and electrical wiring. Filling of holes, gaps and joints. Fixing and insulating of wall panels, corrugated sheets, roof tiles, etc.

- High thermal & acoustic insulation
- Expansion rate - 30-40 times initial volume
- For internal & external use
- Can be sanded & painted when cured

### OPTIONS

150ml Hand Held: Champagne

750ml Hand Held: Champagne

750ml Gun Grade: Champagne



## Foam & Gun Cleaner

### DESCRIPTION

Aerosol applied, solvent based polyurethane foam cleaner.

### APPLICATIONS

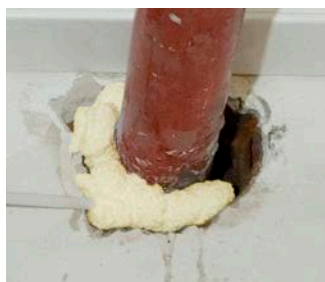
Used for the cleaning of PU Foam applicator guns. Gun applied PU Foam valves and uncured PU Foam, can also be quickly and easily removed with the attachable spray nozzle.



- Quick & easy to use
- Attachable spray nozzle
- Solvent based

### OPTIONS

500ml: Clear





## Sanitary Silicone

### DESCRIPTION

Acetoxy curing silicone specially formulated for use in hot, humid conditions such as bathrooms and kitchens. Cures to form a flexible, durable waterproof seal with good resistance to abrasion and common detergents. Good adhesion to glass (without primer), most acrylics, ceramics, vitreous surfaces, painted surfaces and anodised aluminium.

### APPLICATIONS

For all waterproofing applications where protection against mildew is required, such as the jointing of baths, sinks, toilets, showers, kitchen furniture, ceramic tiles and plumbing fixtures.

- Mould resistant
- Fast Curing
- Good Extrudability
- Durable

### OPTIONS

300ml Cartridge



## Bathroom & Shower Silicone

### DESCRIPTION

Low Modulus Neutral cure silicone. Contains a powerful anti-fungicidal agent. Virtually odourless. Very fast skinning time and final cure. Solvent free. Thick bodied. Highly elastic. Primerless adhesion on all common construction materials. Resistant to UV, rain, snow, ozone, and many chemicals. High/low temperature resistance.

### APPLICATIONS

For all waterproofing applications where protection against mildew is required, such as the jointing of baths, sinks, toilets, showers, ceramic tiles and plumbing fixtures.

- Flexible
- Mould resistant
- Waterproof
- Low odour

### OPTIONS

300ml Cartridge



## Kitchen Silicone



### DESCRIPTION

Food safe, low modulus neutral cure silicone. Contains a powerful anti-fungal agent. Virtually odourless. Very fast skinning time and final cure. 100% silicone, no shrinking. Thick-bodied. Primerless adhesion on all sanitary materials, including plastics. Highly elastic. Resistant to UV, rain, snow, ozone and many chemicals.

### APPLICATIONS

Sealing sanitary, construction and industrial applications where food contact is required. Sealing in areas of high humidity such as container, cold-storage, air conditioning, washroom, kitchen and other areas prone to high humidity.

- Food safe
- Low odour
- Mould Resistant
- Fast curing

### OPTIONS

300ml Cartridge



Brilliant  
White



Clear



Black





## Interior Frame Sealant

### DESCRIPTION

High quality acrylic polymer based sealant and filler. Solvent free and virtually odourless. Very easy to apply. Colourfast and waterproof after curing. Very good adhesion on many porous surfaces. Can be painted over after curing.

### APPLICATIONS

Sealing of window sills, skirting boards, architraves, plasterboard, brickwork etc. Filling of small cracks in plaster.

- Flexible
- Paintable
- Smooth finish
- Virtually odourless

### OPTIONS

300ml Cartridge



White



## Exterior Frame Silicone

### DESCRIPTION

Low Modulus Neutral (LMN) formulation for high movement joints. Fast curing. Flexible and weathertight seal. Adheres to most common building materials including glass, other glazed surfaces, metals, wood, aluminium and PVCu.

### APPLICATIONS

Sealing and perimeter pointing of wooden, aluminium and PVCu window and door frames. Sealing and bonding plastic trim and cladding. Glazing. Construction and general purpose joint sealing.

- Flexible
- Mould resistant
- Waterproof
- Fast Curing

### OPTIONS

300ml Cartridge



White



Clear



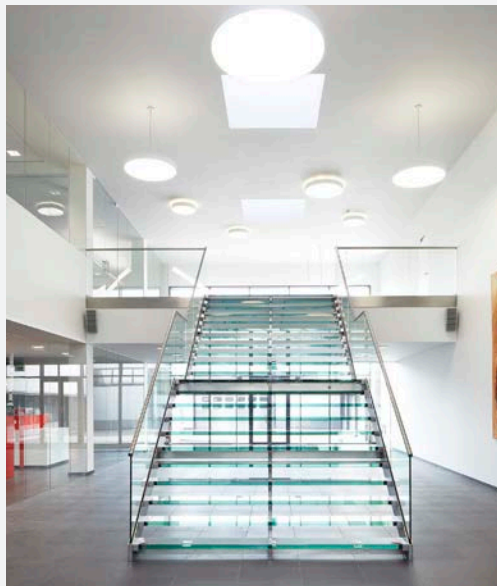
Brown



Grey



Black



## Glazing Silicone

### DESCRIPTION

Low Modulus Acetoxy (LMA) silicone that cures rapidly to form a permanently flexible and extremely durable weathertight seal. It bonds strongly to clean uncoated glass, ceramics and glazed or painted surfaces without the need for a primer.

### APPLICATIONS

Traditional glazing joints, door and window frames, shop windows, display cases, panels, signs, portable buildings, conservatories, greenhouse, heating, HVAC ducting.

- Low Modulus Acetoxy
- Weather resistant
- Flexible
- No primer required

### OPTIONS

300ml Cartridge







## Lead Sheet Sealant

### DESCRIPTION

Low Modulus Neutral cure silicone. Eliminates the need for grouting. Long life. Adhesion to most building materials - all types of lead (BS:EN 12588 (1999) compatible, milled, rolled, sand cast, water-cooled), other metals, brickwork, concrete, granite, marble, slate, cement, stone and roofing tiles. Stain free on most substrates. Lead Grey colouring. Non-corrosive. Good UV and weather resistance. Forms a watertight and permanently flexible joint.

### APPLICATIONS

Roofing joints. Sealing lead flashing into brick, stone or concrete. Joints on gutters, downpipes and venting. Steel roofing. Sealing overlaps in rigid sheet roofing.

- Excellent Adhesion
- Stain free
- Good UV resistance
- Weather resistant

### OPTIONS

300ml Cartridge



Grey



## Roof & Gutter Sealant

### DESCRIPTION

A rubberised, oil based sealant which remains predominantly in a semi-dry, paste like condition. The nature of this product ensures excellent adhesion to most common roofing materials including asphalt, bitumen, felt, metals and wood.

### APPLICATIONS

Permanent weatherproofing of roofing applications. Sealing of guttering, downpipes, chimneystacks, lap joints, attic windows, cornices, ventilation ducts and flashings. Bedding of roof sheets and felts. Sealing of bituminous supports.

- Weatherproof
- Excellent Adhesion
- Seals Roof Leaks
- Seals Guttering



### OPTIONS

300ml Cartridge



Black



## All Weather Sealant

### DESCRIPTION

A specially formulated sealant that provides strong adhesion to most building surfaces, even wet or under water. Suitable materials include wood, glass, aluminium, steel, bitumen, rigid PVC. The product remains flexible, will not crack or slump. Paintable.

### APPLICATIONS

Sealing of cracks in typical roofing applications including attic windows, gutters and drainpipes. Emergency repairs during rain including leaks.



- Weather Resistant
- Underwater use
- Excellent Adhesion
- Paintable

### OPTIONS

300ml Cartridge



Clear



## Waterstop

### DESCRIPTION

ACRYLIC POLYMER based, brushable waterproof coating for instant repair in dry, damp and wet conditions. Ready to use, no mixing needed. Contains synthetic fibres which enhance structural strength. Waterproof and colourfast. Fully elastic when cured. Resistant to UV and temperature variations. Can be applied under all weather conditions. Excellent adhesion to many substrates.

### APPLICATIONS

Emergency repair and renovating of flat and pitched roofs, gutters, cupolas etc. under all weather conditions. Waterproofing of cracks in roofing.

### OPTIONS

4kg Tin: Grey



## Butyband

### DESCRIPTION

BUTYL rubber based, ready to use, self-adhesive, elastoplastic flashing and sealing tape. Fast and excellent adhesion to many substrates. Waterproof. Flexible even when cold. UV and weather resistant. Self-adhesive.

### APPLICATIONS

Sealing around chimneys, air vents, skylights, window sills and sliding doors. Universal sealing and repairing tape. Sealing of glass constructions. Sealing in general and metal sheet working (e.g. sealing of sectional elements in metal constructions).

### OPTIONS

10m roll: 75mm, 100mm, 150mm, 225mm, 300mm: Lead

10m roll: 75mm, 100mm, 150mm, 225mm, 300mm: Aluminium



## Grip All Adhesive

### DESCRIPTION

High performance, premium grade, fast curing, gap filling, construction adhesive. Grip All has good initial grab in both vertical and horizontal positions. Fast drying. High bond strength. Excellent adhesion to most building surfaces including wood, metals, most plastics, glass, aluminium, concrete, ceramics, plasterboard and breezeblock. Overpaintable.

### APPLICATIONS

Fixing battens, window sills, skirting boards, coving, plasterboard, carpet grippers, wall and floorboards and window frames.

- High Bond strength
- Instant Grip
- Fast cure
- Solvent based

### OPTIONS

300ml Cartridge



Beige



## Grip All Solvent Free Adhesive

### DESCRIPTION

High performance, premium grade, fast curing, gap filling construction adhesive. Grip All has good initial grab in both vertical and horizontal positions. High bond strength. Excellent adhesion to most building surfaces including wood, metals, most plastics, glass, concrete, ceramics, plasterboard and polystyrene. Dries white. Overpaintable.

### APPLICATIONS

Fixing battens, window sills, skirting boards, coving, carpet grippers, edge strips, wall and floorboards and window frames.



- Paintable
- Odourless
- Fast cure
- High strength

### OPTIONS

300ml Cartridge



White

## Water Resistant PVA Wood Glue

### DESCRIPTION

A one component, humidity resistant, interior and exterior PVA wood adhesive that fulfills the requirements for long term high bond strength. Water resistant to class D3 (EN204 / 5).



### APPLICATIONS

Suitable for bonding of wood products, MDF, particle board, formica, veneers, oak and tropical hardwood.



- Conforms to D3:EN204
- Odourless
- Fast Drying
- High Bond strength

### OPTIONS

1 Ltr	5 Ltr
	
White	White

## Mitre Kit

### DESCRIPTION

CYANOACRYLATE based high viscosity adhesive with aerosol activator. Particularly useful for production lines and UPVC window trim. Activator reduces blooming and odour. Fast acting. Curing will occur almost instantly. Easy to use. Non-yellowing.

### APPLICATIONS

Used in the furniture, timber, kitchen and plastics industries where its instant bonding properties dramatically reduce assembly times for mitre joints when compared to conventional wood adhesives. The product is also suitable for instant bonding of MDF, rubber, PVCu, metals and most plastics.



- Cyanoacrylate two part adhesive with activator spray
- High bond strength
- High viscosity adhesive
- Can be used on most non-porous substrates

### OPTIONS

Standard Size - 50g Bottle & 200ml Aerosol: Clear

Mitre Kit comes in a clear clamshell packaging





# EXPRESS SEALANTS



Soudal Express is a range of professional quality sealants.

**DIY JUST GOT FASTER**





## General Purpose

### DESCRIPTION

A high quality general purpose neutral cure silicone sealant. Contains anti-fungicidal agents. Virtually odourless, fast skinning time and final cure. Thick bodied remaining permanently flexible, colour fast and UV resistant.

### APPLICATIONS

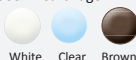
Sealant suitable for all applications around the home including bathrooms, showers and kitchens, windows and doors. For internal and external use.



- Weatherproof in 1 hour
- For internal and external use
- Excellent adhesion
- Resists mould

### OPTIONS

#### 300ml Cartridge



White Clear Brown



## Decorators Sealant

### DESCRIPTION

A high quality fast drying water based acrylic sealant which remains flexible and can be painted after 10 minutes. Excellent adhesion on most building materials including plaster, plasterboard, timber, brick, masonry, PVCu and aluminium.

### APPLICATIONS

Filling cracks in plaster and concrete. Sealing around skirting boards, window sills, window and door frames and other interior joints. Do not use on natural stone, polyethylene (PE), polypropylene (PP), glass and metal.

- Ready to paint in 10 minutes
- Excellent adhesion
- Smooth Finish
- Interior use

### OPTIONS

#### 300ml Cartridge



White



## Kitchen Silicone

### DESCRIPTION

A high quality anti-mould food safe silicone sealant, which remains permanently flexible, colour fast and UV resistant. Neutral cure with excellent adhesion on most building and kitchen materials.

### APPLICATIONS

Low odour sealant suitable for all sanitary applications in kitchens and food preparation areas, including on countertops, tiles, sinks, stainless steel, glass, timber, corian,... Do not use on natural stone, polyethylene (PE), polypropylene (PP).

- Waterproof in 1 hour
- Anti-bacterial
- Food safe
- Low odour

### OPTIONS

#### 300ml Cartridge



White Clear Black



## Bathroom & Shower Silicone

### DESCRIPTION

A premium quality neutral cure anti-mould silicone sealant which remains permanently flexible, colour fast and UV resistant. Excellent adhesion on most building and bathroom materials.

### APPLICATIONS

Low odour sealant suitable for all sanitary applications in bathrooms and showers, including around shower trays, baths, basins, sinks, toilets, mirrors, tiles, bathroom panels and countertops. Do not use on natural stone, polyethylene (PE), polypropylene (PP).



- Waterproof in 1 hour
- Anti-mould
- Low odour
- Excellent adhesion

### OPTIONS

#### 300ml Cartridge



White Clear Ivory

## Window & Door Silicone

### DESCRIPTION

A high quality neutral cure silicone sealant which remains permanently flexible, colour fast and UV resistant. Excellent adhesion on most building materials including brick, masonry, PVCu, timber and aluminium.

### APPLICATIONS

Perimeter sealing of PVCu, timber and aluminium window and door frames, glazing, expansion joints and other interior and exterior sealing applications. Do not use on natural stone, polyethylene (PE), polypropylene (PP). Avoid contact with insulated glass unit sealant.



- Weatherproof in 1 hour
- For internal & external use
- Highly flexible
- Excellent adhesion

### OPTIONS

300ml Cartridge



White Brown

## Roof & Gutter Sealant

### DESCRIPTION

Flexible bitumen based sealant for all roofing, gutter repairs and joints. Can be applied under water, on damp surfaces and in cold conditions. Excellent adhesion on all materials including roof, gutter and insulation materials.

### APPLICATIONS

Repair product suitable for emergency roof repairs and gutter joints. Can be used for sealing, bonding and filling of roofing materials, including felt, roof sheets, gutters and sewage pipes.



- Waterproof in 10 minutes
- Stop leaks
- Even under water
- Excellent adhesion

### OPTIONS

300ml Cartridge



Black

## Introduction

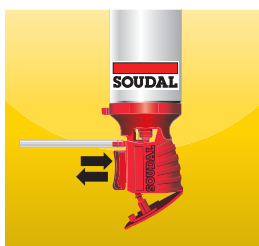
The Genius Gun is a specially designed patented trigger mechanism ensuring precise application and removing the need for an additional gun. The ergonomic handgrip fits perfectly and can be easily operated with one hand. The built-in closing system with bung allows the re-use of the can for up to 6-weeks.



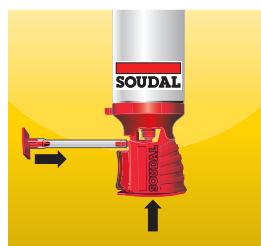
### Easy To Use



### Accurate



### Re-usable



## PU Adhesive

### DESCRIPTION

Genius Gun PU Adhesive is a fast curing hand held polyurethane adhesive, ideal for bonding all types of insulation materials and boards on walls and roofs. A specially designed patented trigger mechanism ensures precise dosage and removes the need for an additional gun. It is easy to use, can be operated with one hand and is re-useable up to 6-weeks after first use.

### APPLICATIONS

All interior and exterior bonding of common building materials on (un)even surfaces. PU Adhesive can be applied on surfaces such as: plasterboard, dry lining, Rockwool, insulation board, bricks, concrete, plaster, wood, metal, aluminium, stone, ceramics, MDF, polystyrene, steel, lead, zinc, polyurethane, laminate, cork, chipboard, timber, bitumen and many more building materials.



- Re-usable
- One-handed operation
- Fast curing
- Vertical and horizontal applications

### OPTIONS

750ml Genius Gun: Champagne



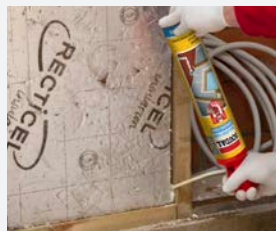
## Insulation Foam

### DESCRIPTION

Specially designed moisture curing polyurethane insulation foam for applications which have high and repetitive movement, or where vibration resistance is required. The specially designed Genius Gun patented trigger mechanism ensures precise dosage and removes the need for an additional gun. Easy to use, can be operated with one hand and is re-useable up to 6-weeks after first use.

### APPLICATIONS

Excellent thermal and acoustic insulation around doors and window frames, pipe penetrations, insulation and roofing materials and general construction. Fire class DIN 4102 B3.



- Re-usable
- One-handed operation
- Flexible
- Excellent thermal & acoustic insulation

### OPTIONS

750ml Genius Gun: Champagne



## Gap Filling Foam

### DESCRIPTION

All-purpose polyurethane B3 foam filler. Moisture curing self-expanding foam with the specially designed Genius Gun patented trigger mechanism that ensures precise dosage and removes the need for an additional gun. Easy to use, can be operated with one hand and is re-useable up to 6-weeks after first use.

### APPLICATIONS

General all-purpose filling of holes, gaps and joints. Adheres to all common building materials, resistant to water, heat and ageing. Can be cut, sanded, plastered and painted after full cure. Not UV resistant.

- Re-usable
- One-handed operation
- Fast curing
- Expansion rate—35 times initial volume

### OPTIONS

500ml Genius Gun: Champagne

750ml Genius Gun: Champagne





All you need is...  
**Fix ALL®.**



STRONG



FREE



EXTERIOR



FLEXIBLE



PAINTED



Fix ALL®

The Fix ALL range can be applied on all\*  
common surfaces including:

Bricks	Concrete	Stone	Marble
Granite	Plaster	Wood	MDF
Chipboard	Rockwool	Cork	Ceramics
Laminate	Steel	Glass	Mirror
Copper	Aluminium	Lead	Zinc
Ceramics	Porcelain	Cardboard	PVC
Polystyrene	Polyurethane	Slate	Synthetics

\*Not suitable for PE, PP or Teflon.



Friendly to the environment and the user  
no solvents, halogens, acids, isocyanates\*

## X-treme



### DESCRIPTION

EXTREME TACK high strength elastomeric adhesive with enhanced mechanical properties. The ULTIMATE in initial grab - 400kg/m2. Can be applied in all weather conditions. Internal and external use. Virtually odourless. Primerless adhesion on most construction materials, including wet and damp surfaces. Easy gunnability.

### APPLICATIONS

For all bonding applications where initial grab and final bond strength is extremely critical. Heavy duty bonding in all weather conditions, on most surfaces. Bonding of porous natural stone surfaces such as marble and limestone.

- Extreme tack
- Ultimate initial grab - 400kg/m2
- Very high final mechanical properties
- Primerless adhesion
- Virtually odourless
- All weather use

### OPTIONS

290ml Cartridge



White





## High Tack



### DESCRIPTION

Super strong sealant, adhesive and filler. Very high initial tack. Can be applied in all weather conditions (including wet and damp surfaces), internally and externally. No solvents or odours. Primerless adhesion on most construction materials. Overpaintable with most paints. Non-staining on porous natural stones. Suitable for sanitary applications.

### APPLICATIONS

For all bonding, sealing & filling applications where initial grab is important. Heavy duty bonding and sealing in all weather conditions, on most surfaces. Paintable elastomeric sealing and bonding. Bonding & sealing of porous natural stone surfaces such as marble and limestone. Sanitary sealing and bonding.

- Super strong
- High initial tack
- Non staining
- Mould resistant
- Primerless adhesion
- Virtually odourless
- All weather use
- Isocyanate and silicone free

### OPTIONS

290ml Cartridge	80ml Tube
<div>White</div> <div>Black</div>	<div>White</div>
<div>Grey</div> <div>Brown</div>	



## Crystal



### DESCRIPTION

Super clear sealant, adhesive and filler. 100% crystal clear. Can be applied in all weather conditions (including wet and damp surfaces), internally and externally. No solvents or odours. Primerless adhesion on most construction materials. Overpaintable with most paints. Suitable for sanitary applications.

### APPLICATIONS

For all bonding, sealing & filling applications where transparency of the final bond or seal is important. Heavy duty bonding and sealing in all weather conditions, on most surfaces. Paintable elastomeric sealing and bonding. Sanitary sealing and bonding - kitchens, bathrooms, showers etc.



- 100% Crystal Clear
- Primerless adhesion
- Virtually odourless
- All weather use
- Isocyanate and silicone free
- Mould resistant

### OPTIONS

290ml Cartridge	80ml Tube
<div>Crystal Clear</div>	<div>Crystal Clear</div>



## Turbo



### DESCRIPTION

Super fast sealant, adhesive and filler. Maximum strength build up in the shortest possible time. High initial tack. Can be applied in all weather conditions (including wet and damp surfaces), internally and externally. No solvents or odours. Primerless adhesion on most construction materials. Overpaintable with most paints. Non-staining on porous natural stones. Suitable for sanitary applications.

### APPLICATIONS

For all bonding, sealing & filling applications where initial grab and adhesive build up speed is critical or important. Heavy duty bonding and sealing in all weather conditions, on most surfaces. Paintable elastomeric sealing and bonding. Bonding & sealing of porous natural stone surfaces such as marble and limestone. Sanitary sealing and bonding.



- Fixed in 20 minutes
- Ultimate bond strength in 3 hrs
- Multi use
- Primerless adhesion
- Odourless
- Weather proof and Waterproof
- Mould resistant
- Non staining

### OPTIONS

290ml Cartridge



White



## Flexi



### DESCRIPTION

Multi use sealant, adhesive and filler. Can be applied in all weather conditions (including wet and damp surfaces), internally and externally. No solvents or odours. Primerless adhesion on most construction materials. Overpaintable with most paints. Non-staining on porous natural stones. Suitable for sanitary applications.

### APPLICATIONS

For all bonding, sealing & filling applications in all weather conditions, on most surfaces. Paintable elastomeric sealing and bonding. Bonding & sealing of porous natural stone surfaces such as marble and limestone. Sanitary sealing and bonding - kitchens, bathrooms and showers.

- Multi use
- Primerless adhesion
- Virtually odourless
- All weather use
- Isocyanate and silicone free
- Mould resistant
- Non staining

### OPTIONS

290ml Cartridge



White



Black



Grey



Brown

80ml Tube



White



## Fills & Bonds

### DESCRIPTION

Ready to use polyurethane based adhesive and filler, which replaces traditional mortar based adhesives. Ready to use without mixing which saves time, effort and money. Paintable. Fast curing. Can be applied to damp surfaces. Excellent thermal and acoustic insulation properties. DIN 4102 B2 Fire rated. Available in Gun Grade and patented Hand Held versions.

### APPLICATIONS

For the bonding of heavy weight building materials such as plasterboard, dry lining, rockwool, insulation board, bricks, concrete, plaster, wood, metal, aluminium, stone, ceramics, MDF, polystyrene, steel, lead, zinc, polyurethane, laminate, cork and chipboard. Can be used on walls or roofs. Filling of large gaps around windows, doors and penetrations.

- Ready to use
- No mixing
- Fills & bonds
- Fast curing
- Paintable
- Damp surface adhesion
- Fire class DIN 4102 B2

### OPTIONS

750ml Hand Held: Orange

750ml Gun Grade: Orange



## Floor & Walls

### DESCRIPTION

Ready to use, trowellable flexible adhesive. No mixing required. High initial grab. Can be applied on wet and damp surfaces, internally or externally. No solvents or odours. Primerless adhesion on most construction materials. Non-staining on porous natural stones. Suitable for sanitary applications.

### APPLICATIONS

Elastomeric bonding of many types of sheet materials on walls and floors - tiles, stainless steel panel, splashbacks, wooden panelling, carpet tiles, natural stone cladding, PVCu hygienic cladding. Can be used on damp and difficult substrates, horizontally or vertically.



- Ready to use
- No mixing
- Primerless adhesion on most materials
- Virtually odourless
- All weather use
- Isocyanate and silicone free
- Mould resistant

### OPTIONS

4kg Bucket



White



Professional quality notched trowel spreaders are available, see page 53.



## Repair Express Cement

### DESCRIPTION

HIGH SPEED acrylic polymer based, textured repair cement. For easy and quick reparation or filling of joints and cracks in concrete. Can be applied by trowel or gun. Sandable and over-paintable once dried. Non-shrinking. Can be used for internal and external applications.

### APPLICATIONS

For repairing holes and cracks in concrete and cement. For repairing joints in masonry. Repairing of damages in concrete stairs etc.



- Acrylic polymer high speed repair cement
- Very fast curing
- Excellent adhesion on many mineral surfaces
- Can be used internally and externally
- Non-shrinking
- Textured finish
- Paintable

### OPTIONS

300ml Cartridge



Grey

## Repair Express Plaster

### DESCRIPTION

HIGH SPEED acrylic polymer based, lightweight repair plaster. For an easy and quick reparation or filling in walls & ceiling e.g. cracks, screw holes etc... Can be applied by trowel or gun. Sandable and over-paintable once dried. Non-shrinking.

### APPLICATIONS

For the filling and repair of cracks and small holes in walls and ceilings - plasterboard, concrete, stone, plasterwork, masonry and decorative plaster. For the filling of static joints and cracks in walls and ceilings.



- Acrylic polymer high speed repair plaster
- Smooth finish
- Very fast curing
- Non-shrinking
- Can be sanded after curing
- Paintable
- Very good adhesion on many porous materials

### OPTIONS

290ml Cartridge



White

250ml Tub



White



- Fibre reinforced technology
- Ultra-strong gap filling adhesive
- Extremely high initial grab



**BIGGER. FASTER. STRONGER.**



## T-REX Solvented

### DESCRIPTION

SOLVENT BASED gap filling construction adhesive, with Soudal's unique Fibre Reinforced Technology. High initial grab - 125kg/m<sup>2</sup>. Very high final bond strength. Compatible with most building materials, porous and non-porous. Direct application onto one surface. Moisture resistant. Replaces screws and nails.

### APPLICATIONS

Bonding of heavy materials such as wooden skirting boards, window sills, plaster and plasterboard. Bonding of carpet grippers, edge strips and stair nosings. Bonding of wall and floorboards, window frames and partitions. Repair of loose tiles.

- Solvent based construction adhesive
- High initial grab - 125kg/m<sup>2</sup>
- Gap filling properties
- Fast strength build up
- Porous and non-porous materials
- Fibre Reinforced Technology

### OPTIONS

310ml Cartridge



Beige



## T-REX Solvent Free

### DESCRIPTION

SOLVENT FREE gap filling construction adhesive, with Soudal's unique Fibre Reinforced Technology. Extremely high initial grab - 300kg/m<sup>2</sup>. Very high final bond strength. Compatible with most building materials, but especially effective on porous surfaces. Direct application onto one surface. Moisture resistant. Replaces screws and nails. Works on materials which are sensitive to solvents e.g. polystyrene. Virtually odourless.

### APPLICATIONS

Bonding of heavy materials such as wooden skirting boards, window sills, plaster and plasterboard. Bonding of carpet grippers, edge strips and stair nosings. Bonding of wall and floorboards, window frames and partitions. Repair of loose tiles. Fixing polystyrene and other soft construction materials.

- Solvent free construction adhesive
- Extreme initial grab - 300kg/m<sup>2</sup>
- Gap filling properties
- Virtually odourless
- Porous and solvent sensitive materials
- Fibre Reinforced Technology

### OPTIONS

310ml Cartridge



White



## Fire resistance standards

The fire resistance rating indicates the duration in minutes for which a passive fire protection system can withstand a standard fire resistance test.

Soudal FR products have been independently tested against British and European norms such as EN 1366-4 and BS476 part 20, and they have been shown to have fire resistance ratings of up to 4 hours depending on configuration. These results are summarised in our test and classification reports, which are available on request.

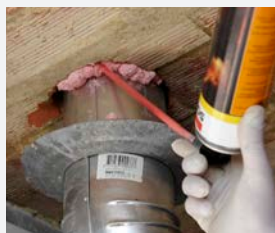
## Soudafoam FR

### DESCRIPTION

FIRE RATED one component, expanding polyurethane foam filler. Rapid curing. Excellent thermal and acoustic insulation properties. Expands 35-40 times its initial volume. Excellent primerless adhesion on most construction materials. Available in Hand Held, Gun Grade and Click & Fix® versions.

### APPLICATIONS

For use in passive fire protection systems as a large gap filler; installation of fire retardant window and door frames; sealing of expansion and connection joints, penetration seals.



- 4hr fire resistance depending on joint configuration
- Tested according to EN 1366-4.

### OPTIONS

750ml Hand Held: Pink

750ml Gun Grade: Pink

750ml Click & Fix®: Pink

## Fire Silicone B1 FR

### DESCRIPTION

FIRE RATED neutral cure, silicone sealant. Solvent free. Virtually odourless. Primerless adhesion on all common construction materials (glass, plastics, masonry substrates, metals and wood). High movement capability. Resistant to UV, rain, snow, and ozone, and many chemicals. High and low temperature resistance.


### APPLICATIONS

For use in external and internal passive fire protection systems as an elastic joint sealant; installation of fire retardant window and door frames, fire retardant expansion and connection joints, penetration seals.



- 4hr fire resistance depending on joint configuration
- Tested according to EN 1366-4
- Neutral cure silicone
- Weatherproof
- Highly elastic.

### OPTIONS

310ml Cartridge	600ml Foilpack:
 White	 Grey

## Firecryl FR

### DESCRIPTION

FIRE RATED intumescent acrylic sealant and filler. Totally solvent, silicone and isocyanate free. Colourfast and waterproof after curing. Can be painted over after curing. Odourless. Primerless adhesion on most construction materials.


### APPLICATIONS

For use in internal passive fire protection systems as a joint sealant or filler; installation of fire retardant window and door frames, fire retardant connection joints, penetration seals, internal garages.



- 4hr fire resistance depending on joint configuration
- Tested according to EN 1366-4
- Acrylic polymer
- Paintable with most coatings.

### OPTIONS

310ml Cartridge
 White





## Firecement HT

### DESCRIPTION

HIGH TEMPERATURE resistant fire cement. Withstands temperature of up to +1500°C. Excellent adhesion to a wide range of building materials.

### APPLICATIONS

For the sealing of ovens, furnaces and chimney flues. Hard setting. Suitable for internal applications.



- Extreme temperature resistance
- Internal use
- Hard and durable
- High temperature resistant (up to 1500°C).

### OPTIONS

310ml Cartridge



Black



## Soudaseal FR

### DESCRIPTION

FIRE RATED non-staining, SMX® Polymer, sealant and adhesive for use in passive fire protection systems. Totally solvent, silicone and isocyanate free. Highly elastic. Paintable with most coatings. Odourless. Primerless adhesion on most construction materials.

### APPLICATIONS

For use in external and internal passive fire protection systems as a joint sealant or adhesive: installation of fire retardant window and door frames, fire retardant expansion and connection joints, and penetration seals.

- 4hr fire resistance depending on joint configuration
- Tested according to EN 1366-4
- SMX® Polymer
- Weatherproof
- Paintable with most coatings
- Non staining on porous stone substrates.

### OPTIONS

600ml Foilpack:



Grey





## Silirub HT A

### DESCRIPTION

HIGH TEMPERATURE resistant acetoxy silicone sealant. Withstands high temperatures of up to 285°C. Highly flexible and weatherproof. Primerless adhesion on many common construction materials (glass, ceramic, porcelain, metals and wood). Resistant to UV, rain, snow and ozone, and many chemicals. High movement capability.

### APPLICATIONS

For the sealing of elastic joints which require a high temperature resistance: gaskets, hot water installations, pipework, ovens, furnaces and chimney flues. Suitable for external and internal applications.

- High temperature resistant (up to 285°C)
- External and internal use
- Acetoxy silicone sealant
- Highly flexible and durable.

### OPTIONS

310ml Cartridge



Black



## Silirub HT N

### DESCRIPTION

HIGH TEMPERATURE resistant neutral cure silicone sealant. Withstands high temperatures of up to 280°C. Highly flexible and weatherproof. Primerless adhesion on all common construction materials (glass, plastics, masonry substrates, metals and wood). High movement capability. Resistant to UV, rain, snow, and ozone, and many chemicals.

### APPLICATIONS

For the sealing of elastic joints which require a high temperature resistance: gaskets, hot water installations, pipework, ovens, furnaces and chimney flues. Suitable for external and internal applications.



- High temperature resistant (up to 280°C)
- External and internal use
- Neutral cure silicone sealant
- Highly flexible and durable
- Virtually odourless.

### OPTIONS

310ml Cartridge



Black



## SMX®-30 PLUS

**DESCRIPTION**  
PREMIUM QUALITY trowellable, SMX® polymer based, universal parquet adhesive. 100% solids content - solvent and water free. Suitable for bonding many types of parquet floors onto suitable indoor substrates. Very low emissions - conforms to EC-1R PLUS label. Ready to use, single component, no mixing required. Extremely rapid cure and

strength build up - load bearing after 2 hours, sandable after 12 hours. Very high final bond strength - more than 2N/mm<sup>2</sup>.

### APPLICATIONS

Suitable for indoor bonding of all types of wooden floors such as solid, stab, pre-finished, on-end parquet, wood-plank, wood-block and laminates. Suitable for use on porous and non-porous substrates such as mosaic, anhydrite, concrete, screeds, wood, chipboard and OSB board. Also includes floors with underfloor heating. Plank widths; 180mm with solid wood, 240mm with engineered wood.

- SMX® polymer trowellable parquet adhesive
- Ready to use, single component, low odour
- EC-1R PLUS label: very low emission
- High final bond strength - more than 2N/mm<sup>2</sup>
- Suitable for underfloor heating

### OPTIONS

16kg Bucket: light Brown

3 x 6kg Bag in Bucket: Light Brown



## MS-30 PLUS

**DESCRIPTION**  
SUPERIOR QUALITY trowellable, hybrid polymer based, parquet adhesive. 100% solids content - solvent and water free. For bonding many types of parquet onto indoor substrates. Very low emissions - conforms to EC-1R PLUS label. Single component, no mixing required. Very rapid cure and strength build up - load bearing after 3 hours,

sandable after 16 hours. Bond strength - more than 2N/mm<sup>2</sup>.

### APPLICATIONS

Suitable for bonding all types of wooden floors; solid, stab, pre-finished, on-end parquet, wood-plank, wood-block and laminates. Suitable for use on porous and non-porous substrates; anhydrite, concrete, screeds, wood, chipboard, OSB board and floors with underfloor heating. Plank widths; 180mm with solid wood, 240mm with engineered wood.

- Hybrid polymer trowellable parquet adhesive
- Solvent, isocyanate and water free - 100% solids content
- EC-1R PLUS label: very low emission
- High final bond strength - more than 2N/mm<sup>2</sup>
- Suitable for underfloor heating

### OPTIONS

6kg, 16kg Bucket: Light Brown

3 x 6kg Bag in Bucket: Light Brown



## MS-20 PLUS

### DESCRIPTION

HIGH QUALITY trowellable, hybrid polymer based parquet adhesive. 100% solids content - solvent and water free. For bonding many types of parquet onto indoor substrates. Very low emissions - conforms to EC-1R PLUS label. Single component, no mixing required. Rapid cure and strength build up - load bearing after 8 hours, sandable after 24 hours. Bond strength - more than 1.2N/mm<sup>2</sup>.

after 24 hours. Bond strength - more than 1.2N/mm<sup>2</sup>.

### APPLICATIONS

Suitable for bonding all types of wooden floors; solid, stab, pre-finished, on-end parquet, wood-plank, wood-block and laminates. Suitable for use on porous and non-porous substrates; anhydrite, concrete, screeds, wood, chipboard, OSB board and floors with underfloor heating. Plank widths; 160mm with solid wood, 200mm with engineered wood.

- Hybrid polymer trowellable parquet adhesive
- Ready to use, single component, low odour
- Solvent, isocyanate and water free - 100% solids content
- EC-1R PLUS label: very low emission
- Suitable for underfloor heating

### OPTIONS

6kg, 16kg Bucket: Light Brown

3 x 6kg Bag in Bucket: Light Brown





## Sealant Remover

### DESCRIPTION

A ready-to-use and fast-working spray based on terpenes for removing hardened silicones and Hybrid Polymers. Can be applied on most surfaces, including aluminium, coatings, ceramics, laminated board, paint and certain plastics.

### APPLICATIONS

Removal of old silicone residue, spilled silicone or spilled Hybrid Polymers from different kind of surfaces.

- Fast-working
- Does not drip
- Specifically for silicones and Hybrid Polymers
- Spray action

### OPTIONS

400ml Aerosol Spray



## Adhesive Remover

### DESCRIPTION

Transparent solvent mixture suitable for removing fresh glue stains and for the cleaning and degreasing of metal surfaces.

### APPLICATIONS

Transparent solvent mixture suitable for removing fresh glue stains. Cleans brushes, palette knives and spatulas. Removes excess contact adhesive. Not suitable for polystyrene and Plexiglas. May damage certain surfaces (e.g. plastics).

- Removes fresh glue stains
- Cleans and degreases
- Does not leave residue
- Aerosol can be used at any angle (360°)

### OPTIONS

400ml Aerosol Spray



## Multi-Cleaner

### DESCRIPTION

A universal cleaning foam spray. Foam action helps to break down dirt and contaminants. Foam product means it does not drip or run.

### APPLICATIONS

Ideally suited for cleaning vertical surfaces such as glass, tiles, mirrors, laminate, PVC, kitchens, car interiors, textile, carpets, office equipment, etc.

- Cleans and degreases
- Highly soluble
- Does not drip
- Does not leave any residues
- Foam action

### OPTIONS

400ml Aerosol Spray

## Cleaner & Degreaser



### DESCRIPTION

Powerful quick-drying cleaner and degreaser for various maintenance and assembly jobs. Can be used on most surfaces (metal, plastics, PVC) and leaves no residue.

### APPLICATIONS

Suitable for cleaning and degreasing mechanical parts. Also suitable for the preparation of surfaces prior to the application of sealants or adhesives. For the removal of uncured excess hybrid, PU or silicone sealants, tar residue, grease, wax.

- Cleans and degreases
- Leaves no residue
- Quick-drying
- Aerosol can be used at any angle (360°)

### OPTIONS

400ml Aerosol Spray

## Brake Cleaner



### DESCRIPTION

Powerful, fast-drying cleaner for brake and clutch parts.

### APPLICATIONS

Removes excess brake fluid, excess oil, dirt, etc. quickly. Prevents squeaking brakes and clutch slipping. Easy to apply from all angles and does not corrode metals.

- Cleans and degreases
- Does not drip
- Quick-drying
- Does not corrode metals
- Prevents squeaking sounds
- Aerosol can be used at any angle (360°)

### OPTIONS

400ml Aerosol Spray





## Multi-Spray

### DESCRIPTION

High grade universal spray with 8-fold action: dust remover, lubricant, cleaner, penetrating oil, anti-corrosive, damp repellent, shock and contact spray. It does not corrode plastics or metals and leaves a protective film on surfaces after use.

### APPLICATIONS

Universal use product that can be used on many components such as screws, bolts, nuts, moving parts, axles, hinges, chains and garden tools.

- Universal use spray
- 8-fold action
- Can be used on metals, plastics and rubbers
- Aerosol can be used at any angle (360°)

### OPTIONS

400ml Aerosol Spray



## White Grease

### DESCRIPTION

Lithium soap and PTFE based penetrating lubricant and grease. Waterproof. Double action effect; applies like oil, then sets like grease. Anti-corrosive properties.

### APPLICATIONS

Suitable for heavy duty lubrication of mechanical parts such as ball bearings, axles, sprockets, conveyer belts and rubber seals.

- Lithium and PTFE based
- Double action oil and grease
- Anti-corrosive
- Heavy duty applications

### OPTIONS

400ml Aerosol Spray







## Vaseline Spray

### DESCRIPTION

Transparent lubricating and protection spray. Dilutes acids and alkalis, and prevents general wear and tear. High temperature resistance.

### APPLICATIONS

Used on metals and plastics to protect against water and weather conditions. Typical applications include door and window hinges, nuts, screws, garden tools and rolling shutters.

- Vaseline based
- Transparent
- Lubricates and protects
- High temperature resistance
- Silicone free
- Aerosol can be used at any angle (360°)

### OPTIONS

400ml Aerosol Spray



## Silicone Spray

### DESCRIPTION

Transparent lubricating and anti-adhesive spray based on high performance silicone oils. Lowers friction and prevents wear and tear on mechanical components. Prevents dirt and grease build up. Very high temperature resistance.

### APPLICATIONS

Used on plastics and rubbers to lubricate and protect. Typical applications include sliding doors and rubber seals, lubricating gutter and pipe seals.

- Silicone based
- Transparent
- Lubricates and protects
- Very high temperature resistance
- Aerosol can be used at any angle (360°)

### OPTIONS

400ml Aerosol Spray



## PTFE Spray

### DESCRIPTION

High grade PTFE based lubricant. Repels water and dirt. Long life protection against friction and wear. Excellent mechanical and thermal stability. High penetration characteristics.

### APPLICATIONS

Used for parts subject to high pressure and temperature loads, especially metals and plastics. Applications include pulleys, chains, gears, ball bearings, conveyer belts and other critical applications.

- PTFE based
- High pressure & temperature resistance
- Long life protection
- Lubricates and protects
- Aerosol can be used at any angle (360°)

### OPTIONS

400ml Aerosol Spray



## Contact Spray

### DESCRIPTION

Universal spray for the cleaning and maintenance of electric contact areas. Dissolves corrosion and oxidation. Reduces humidity. Non corrosive. Suitable for interior and exterior applications.

### APPLICATIONS

Suitable for electric contact points such as switches, batteries and light switches. Cleans and deoxidizes surfaces and improves the power transmission at electric contacts. Stops moisture penetration. Also suitable for dehumidifying of electric wirework and tools.

- Universal use
- Reduces humidity and corrosion
- Interior and exterior use
- Aerosol can be used at any angle (360°)

### OPTIONS

400ml Aerosol Spray



## Degrip All

### DESCRIPTION

A high quality penetrating oil which dissolves rust and corrosion. Superior penetrating characteristics. Protects against rust and corrosion.

### APPLICATIONS

Highly efficient in releasing corroded and rusted metal parts such as nuts, bolts and machine parts. Due to the very low surface tension it penetrates into very small openings to release stuck parts. Can be used with machinery, nuts, bolts, flanges, etc.

- Penetrating action
- Dissolves and protects against rust
- For interior and exterior applications
- Aerosol can be used at any angle (360°)

### OPTIONS

400ml Aerosol Spray



## Cutting Oil

### DESCRIPTION

A high quality oil which prevents overheating of metals when cutting and drilling. Excellent anti-mist characteristics. Silicone free.

### APPLICATIONS

Reduces resistance in cutting tools. Suitable for drilling, milling, cutting, sawing, filing, tapping, turning, planing and punching of steel and most ferrous and non-ferrous metals. Reduces friction and wear. Excellent cooling characteristics.

- Non corrosive, does not contain silicones
- Can be used with most metals
- Anti-misting properties
- Aerosol can be used at any angle (360°)

### OPTIONS

400ml Aerosol Spray

## Zinc Spray Matt



### DESCRIPTION

High-grade zinc spray with sprayable zinc compound (98% zinc). Has a galvanizing action. Protects zinc and unprocessed iron and steel against corrosion. Due to its cathode action, the spray is very economical and effective. Matt finish.

### APPLICATIONS

To be used for coachwork, gutter braces, weld joints and spot welding. Can be used on rust. Good electrical conductor.

- Shiny finishing coat
- Good resistance against mechanical shocks, rubbing and erosion
- Very economic, effective and reliable
- Suitable for spot welding

### OPTIONS

400ml Aerosol Spray

## Zinc Spray Shiny



### DESCRIPTION

High-grade sprayable alu-zinc compound. Alu-Zinc spray has a galvanizing action. Protects zinc and unprocessed iron and steel against corrosion. Due to its cathode action, the spray is very economical and effective.

### APPLICATIONS

To be used for coachwork, gutter braces, weld joints and spot welding. Can be used on rust. Good electrical conductor.

- Shiny finishing coat
- Good resistance against mechanical shocks, rubbing and erosion
- Very economic, effective and reliable
- Suitable for spot welding

### OPTIONS

400ml Aerosol Spray





## PVCu Frame Cleaner Solvent Based

### DESCRIPTION

SOLVENT based cleaner for PVCu materials. Fast acting. Non smear formulation. Removes ingrained dirt.

### APPLICATIONS

Suitable for the removal of dirt, pen and pencil marks on all PVCu window and door frames, decorative trims, fascia and cladding. Can also be used on some types of plastic garden furniture.

- Solvent based cleaner
- Fast acting and drying
- Smear free
- Works on PVCu

### OPTIONS

1L Bottle: Clear



## PVC Frame Cleaner Non Hazardous

### DESCRIPTION

NON-HAZARDOUS cleaner for use on windows and doors - PVCu and glass materials. Fast acting. Non smear formulation. Removes ingrained dirt. Non-flammable. Environmentally friendly, low VOC. Non-abrasive. Low odour.

### APPLICATIONS

Suitable for the removal of dirt, pen and pencil marks on all PVCu materials. Can be used on foiled PVCu. Cleaning all glass surfaces especially in the window industry.

- Non-hazardous cleaner
- Fast acting and drying
- Works on PVCu, foiled PVCu and glass
- Very low VOC
- Non-flammable
- Smear free
- Low odour

### OPTIONS

1L Bottle: Clear

## PVCu Cream Cleaner

### DESCRIPTION

SOLVENT FREE cream cleaner for a sparkling finish on PVCu and other materials. Removes ingrained dirt. Can be buffed to a deep and attractive sheen.

### APPLICATIONS

The cleaner restores the original sheen to PVCu window and door frames, decorative trims, fascia and claddings. Cleaning all PVCu window frames, trim etc.



- Multi use
- Primerless adhesion
- Virtually odourless
- All weather use
- Highly flexible
- Mould resistant - XS1 fungicide
- Non staining
- Conforms to ISO 11600 F 20 HM

### OPTIONS

1L Bottle: Clear

## Glass & Mirror Cleaner

### DESCRIPTION

ALCOHOL based cleaner for the cleaning of different types of glass and mirrors. Fast drying. Non-smear formula.

### APPLICATIONS

Cleaning all glass surfaces especially in the window industry. Suitable for use on mirrors



- Alcohol based cleaner
- Fast acting and drying
- Smear free
- Suitable for glass and mirrors

### OPTIONS

1L Bottle: Blue

25L Jerrycan; Blue

## SWIPEX Wipes

### DESCRIPTION

HEAVY DUTY non-woven cleaning wipes impregnated with a mixture of solvents, biodegradable non-ionic surfactants and skin emollients.

### APPLICATIONS

Designed for the quick and effective removal of adhesives, sealants, oils, paints and greases from hands, tools and non-porous surfaces.



- Heavy duty cleaning wipes
- Removes many types of contaminants
- Suitable for hands and tools
- Kind to skin

### OPTIONS

Flowpack: 20 wipes

Tub: 100 wipes

## SWIPEX Hand Cleaner

### DESCRIPTION

HEAVY DUTY cleaner to remove all kinds of dirt from your hands. Granular texture helps to scrub dirt away. Suitable for removing adhesives, silicone and PU foam. Contains Sericin with moisturiser that protects skin and hands.

### APPLICATIONS

Suitable for the removal of adhesives, silicone, PU foam, paint and oil from hands.



- Heavy duty hand cleaner
- Granular texture to help remove dirt quickly
- Fast acting and drying
- Contains Sericin which moisturises hands
- Works on adhesives, PU foam, silicone, paint and oil

### OPTIONS

1L Bottle: Red





## Cleaning Tissue

### DESCRIPTION

HEAVY DUTY paper cleaning tissues. White colour. 2 Ply. Tear off sheet style. 100% recycled material. Shrink-wrapped. For all general cleaning applications in construction and industry.

- Heavy duty paper cleaning tissues
- White colour
- 2 Ply
- Tear off sheet style
- 100% recycled material

### OPTIONS

Rolls: 190mm x 150mm,  
260mm x 400mm



## Dust Sheets

### DESCRIPTION

HEAVY DUTY cotton calico dust sheet. Genuine cotton will. Protect surfaces e.g. floors and furniture from dust and other work debris. Heavy duty, so hardwearing - resists wear from foot traffic, stepladders etc. Machine washable.

- Heavy duty dust sheet
- Genuine cotton will
- Resistant to foot traffic
- Machine washable

### OPTIONS

Sheet: 9ft x 12ft



## Stair Runner

### DESCRIPTION

HEAVY DUTY cotton calico stair runner. Genuine cotton twill. Protect surfaces e.g. floors and furniture from dust and other work debris. Heavy duty, so hardwearing - resists wear from foot traffic, stepladders etc. Machine washable.

- Heavy duty dust sheet
- Genuine cotton twill
- Sized for use on stairs and corridors
- Resistant to foot traffic

### OPTIONS

Sheet: 24ft x 3ft



## Tarpaulin

### DESCRIPTION

WATERPROOF polyethylene tarpaulin for heavy duty construction use. Double laminated fabric. Reinforced or double stitched hems. Rustproof eyelets. 100% waterproof and tear resistant. Non-shrinking. Rot resistant.

- Waterproof heavy duty polyethylene tarpaulin
- 100% Waterproof
- Double laminated
- Internal and external use

### OPTIONS

Sheet: 9ft x 12ft, 18ft x 12ft



## PU Foam Remover

### DESCRIPTION

GEL BASED PU foam cleaner. Odourless and free of aromatic solvents.

For the quick and easy removal of cured polyurethane foam residues from non-porous surfaces such as plastics, metals and PVCu's.

- Gel based cleaner
- Virtually odorless
- Can be applied by brush or spatula
- Highly effective
- Solvent free

### OPTIONS

100ml Bottle: Clear



## Silicone Remover

### DESCRIPTION

Terpene based, easy to use cleaning gel for the removal of cured silicones and MS Polymers. Liquid gel, easy application by brush. Non-sagging

- Odourless
- Applied by brush or spatula
- Highly effective
- Solvent free

### OPTIONS

100ml Bottle: Clear

## Compact PU Foam Gun

### DESCRIPTION

PROFESSIONAL GRADE polyurethane applicator gun for use with gun foams. Available for Click & Fix® and Gun Grade systems. For the application of PU foams and cleaners.



### OPTIONS

Gun Grade: Standard Size  
Click & Fix: Standard Size

## Design PU Foam Gun

### DESCRIPTION

HEAVY DUTY PROFESSIONAL GRADE metal polyurethane applicator gun for use with gun foams. Available for Click & Fix® and Gun Grade systems. For the application of PU foams and cleaners.



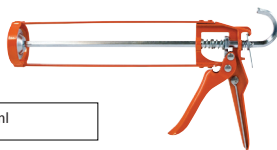
### OPTIONS

Gun Grade: Standard Size, 60cm Long Barrel, 1M Extra-long Barrel.  
Click & Fix: Standard Size.

## Steel Cartridge Gun

### DESCRIPTION

Steel skeleton gun. Soudal dripless system. Suitable for all cartridge applied adhesives, fillers and sealants.



### OPTIONS

Sizes: 310ml and 380ml

## Heavy Duty Cartridge Gun

### DESCRIPTION

Heavy duty steel skeleton gun. Soudal dripless system. Suitable for all cartridge applied adhesives, fillers and sealants.



### OPTIONS

Sizes: 310ml and 400ml



## Foam Nozzles

### DESCRIPTION

Pack of 5 adapter nozzles for any size hand held expanding foam.



## Twisty Nozzles

### DESCRIPTION

Pack of 5 'twist' nozzles.



## Cartridge Cutter

### DESCRIPTION

Cut cartridges easily and safely with our cartridge cutter.



## Trowels

### DESCRIPTION

Professional quality notched trowel adhesive spreader.

Available in two sizes:  
Small bead size (Nr 3) and Large beads size (Nr 11).

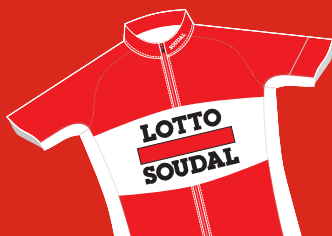


# SOUDABIKE PRO



For more information on the Soudal Bike Range  
visit [www.soudal.bike](http://www.soudal.bike)

**OFFICIAL LOTTO SOUDAL SUPPLIER**



## Notes

[illegible]



# SOUDAL

Soudal (UK) Limited  
Unit A Tame Park  
Vanguard,  
Tamworth, B77 5DY



01827 261 092



01827 284 454



[salesuk@soudal.com](mailto:salesuk@soudal.com)

Headquarters:

Soudal N.V.

Everdongenlaan 18-20,

BE-2300 Turnhout



+32 14 42 42 31



+32 14 42 65 14



[info@soudal.com](mailto:info@soudal.com)

[www.soudal.com](http://www.soudal.com)

[www.fixall.co.uk](http://www.fixall.co.uk)

**LOTTO**  
  
**SOUDAL**



Belgian Cycling Project